



**ADDENDUM NO. 1
WELL 10 - ELECTRICAL
Project No. 230022BID5
BOX ELDER, SD**

BID DATE: November 21, 2024

BID TIME: 2:00 pm MST

LOCATION: Box Elder City Hall
420 Villa Drive
Box Elder, SD
57719

This addendum is written for the purpose of clarification and/or modifications to the Contract Documents. Acknowledgement of Addenda shall be noted on the exterior of the bid envelope and also on the BID PROPOSAL page under the addendum section.

The following changes and/or clarification shall be made to and become part of the project plans and specifications.

Addendum No. 1

1. Update electrical specifications to Bid Item Description No. 203.

- A. Wire must be rated to handle necessary current/voltage requirements. Installation will be in accordance with the manufacturer's recommendations and industry standards. Listed below are known specifications to help determine wire size.
- a. "Power Wire", Baker Hughes model Number C76487 – NSF01
 - i. #2 Solid Conductor.
 - b. Discharge Adapter, Baker Hughes model number 10515179 – NSF02
 - i. 5-1/2" 8 round long casing thread.
 - c. Transformer – Baker Hughes model number C911347
 - i. 520 kVA, 480 V, 1396-4836 V, Step up transformer.
 - d. VFD – Baker Hughes model number C907987
 - i. 519 kVA, 624 A

2. Update Appendix IV to WELL HOUSE ELECTRICAL CONDUIT

- a. See attached

3. Move CERTIFICATION OF PROHIBITED ENTITY to Appendix V

Bid date and time unchanged.

BID ITEM DESCRIPTIONS

(Look at project spec book from TDG for list of Bid Item Descriptions)

1 Item No. 100 – Mobilization

- A. Payment for this bid item will be on a lump-sum basis and will include all equipment, labor, materials, and incidentals required to complete the work per the bid schedule.

2 Item No. 101 – Incidental Work

- A. Incidentals shall mean items of work, as shown on the plans and/or specifications, for which there are no bid items in the Bid Proposal. If no bid item for “incidentals” is included in the bid proposal, the cost of these items shall be included in the contract bid price for related work items.
- B. If a bid item for “incidentals” is included in the bid proposal, such work shall be included as part of this work item.
- C. Payment for this bid item will be on a lump-sum basis and will include all equipment, labor, materials and construction items required to complete the work per the bid schedule.

3 Item No. 200 – Pull wire through existing 3-inch conduit

- A. Wire pulling consists of pulling high voltage and low voltage single phase/poly phase wire of various gauges in existing conduit. Installation will be in accordance with manufacturer’s recommendations and industry standards.
- B. Payment for this bid item will be on a lump-sum basis and will include all equipment, labor, materials, and incidentals required to complete the work per the bid schedule.

4 Item No. 201 – Connect to power panel in prefab building

- A. Payment for this bid item will be on a lump-sum basis and will include all equipment, labor, materials, and incidentals required to complete the work per the bid schedule.

5 Item No. 202 – Connect to existing VFD

- A. This item shall include all work associated with installation of the connections to and from the VFD.
- B. Payment for this bid item will be on a lump-sum basis and will include all equipment, labor, materials, and incidentals required to complete the work per the bid schedule.

6 Item No. 203 – Provide appropriate electrical wire

- A. Wire must be rated to handle necessary current/voltage requirements. Installation will be in accordance with the manufacturer’s recommendations and industry standards. Listed below are known specifications to help determine wire size.
 - a. “Power Wire”, Baker Hughes model Number C76487 – NSF01
 - i. #2 Solid Conductor.

b. Discharge Adapter, Baker Hughes model number 10515179 – NSF02

i. 5-1/2" 8 round long casing thread.

c. Transformer – Baker Hughes model number C911347

i. 520 kVA, 480 V, 1396-4836 V, Step up transformer.

d. VFD – Baker Hughes model number C907987

i. 519 kVA, 624 A

- B. Wire pulling consists of pulling high voltage and low voltage single phase/poly phase wire of various gauges in existing conduit.
- C. Payment for this bid item will be on a lump-sum basis and will include all equipment, labor, materials, and incidentals required to complete the work per the bid schedule.

7 Item No. 204 – Install Electrical Meter at Transformer

- A. This item shall include all work associated with installation of an electrical meter at the City transformer.
- B. Payment for this bid item will be on a lump-sum basis and will include all equipment, labor, materials, and incidentals required to complete the work per the bid schedule.

8 Item No. 205 – Connect To/From City Transformer

- A. This item shall include all work associated with installation of the connections to and from the City transformer. Installation will be in accordance with manufacturer's recommendations and industry standards.
- B. Payment for this bid item will be on a lump-sum basis and will include all equipment, labor, materials, and incidentals required to complete the work per the bid schedule.

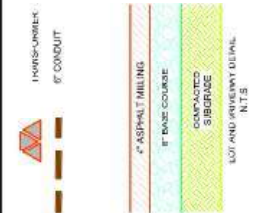
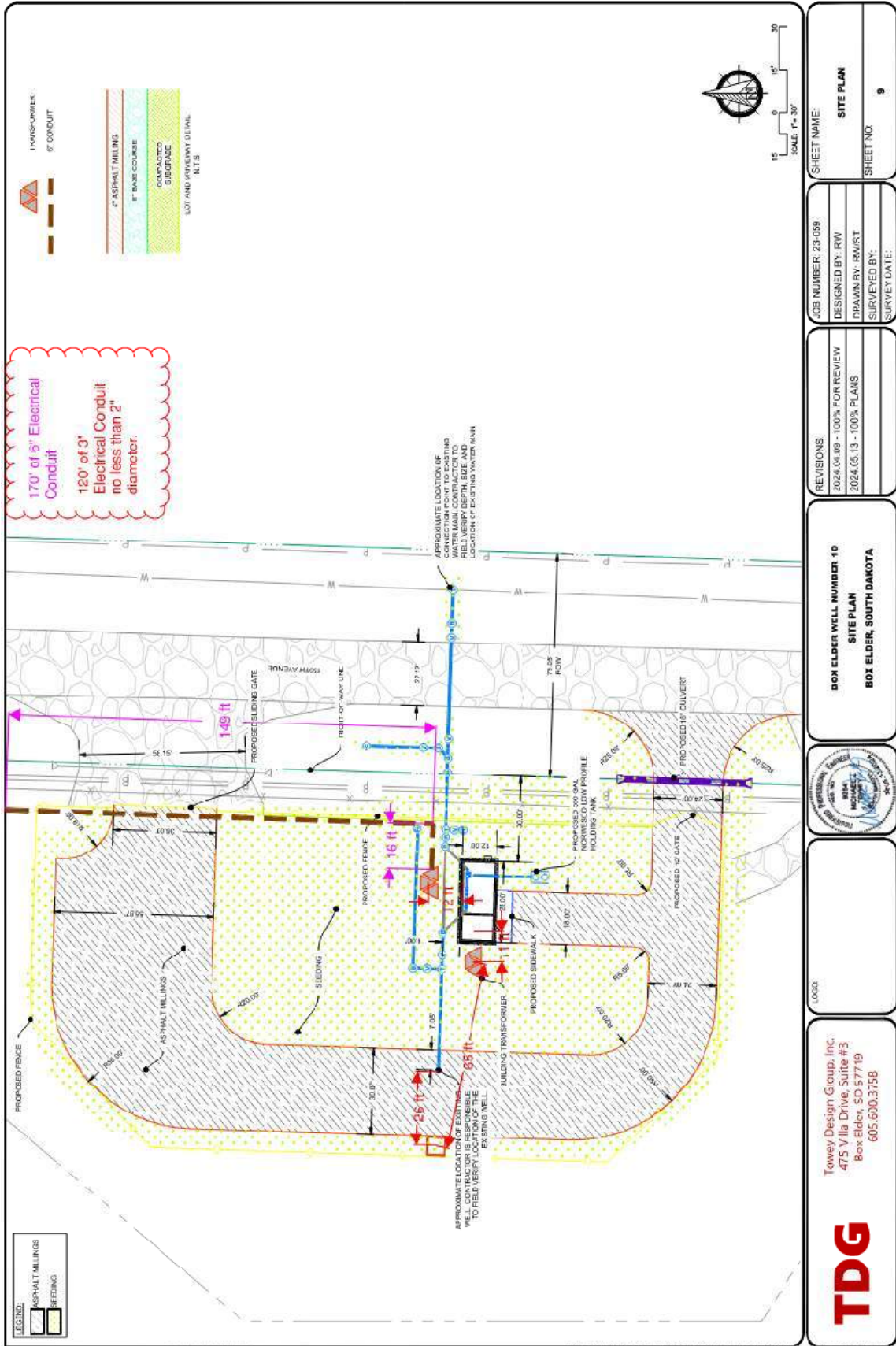
9 Item No. 300 – Provide and install junction box near wellhead

- A. This item consists of installing the junction box near the wellhead. Installation will be in accordance with manufacturer's recommendations and industry standards.
- B. Payment for this bid item will be on a lump-sum basis and will include all equipment, labor, materials, and incidentals required to complete the work per the bid schedule.

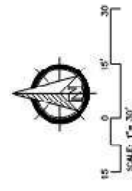
10 Item No. 301 – Construct steel pedestal mount for meter at transformer

- B. This item includes all work related to the construction of the pedestal mount.
- C. Appropriate materials for the pedestal to be constructed from are as follows:
Weatherproof steel or weatherproof wood.
- D. Payment for this bid item will be on a lump-sum basis and will include all equipment, labor, materials, and incidentals required to complete the work per the bid schedule.
- E. Please refer to the WREA Construction Handbook. This can be found on their website, <https://www.westriver.coop/sites/default/files/Residential%20Construction%20Handbook%20-%202022-02-24.pdf>

APPENDIX IV: WELL HOUSE ELECTRICAL CONDUIT



170' of 6" Electrical Conduit
 120' of 3" Electrical Conduit no less than 2" diameter.



SHEET NAME:	SITE PLAN
SHEET NO.:	9

JOB NUMBER: 23-059
DESIGNED BY: RW
DRAWN BY: RM/ST
SURVEYED BY:
SURVEY DATE:

REVISIONS:	2024.04.09 - 100% FOR REVIEW
	2024.05.13 - 100% PLANS

BOX ELDER WELL NUMBER 10
SITE PLAN
BOX ELDER, SOUTH DAKOTA



LOGO

Towey Design Group, Inc.
 475 V Ila Drive, Suite #3
 Box Elder, SD 57719
 605.630.3758



APPENDIX V: CERTIFICATION OF PROHIBITED ENTITY STATUS

SDCL 5-18A-51

Request for Proposal

Solicitation for Bid

Other Procurement

SDCL 5-18A-1(19A) defines "Prohibited Entity" as follows:

"[A]n organization, association, corporation, partnership, joint venture, limited partnership, limited liability partnership, limited liability company, or other entity or business association, including all wholly owned subsidiaries, majority-owned subsidiaries, parent companies, or affiliates, of those entities or business associations, regardless of their principal place of business, which is ultimately owned or controlled by:

- (a) A foreign parent entity from the People's Republic of China, the Republic of Cuba, the Islamic Republic of Iran, the Democratic People's Republic of Korea, the Russian Federation, or the Bolivarian Republic of Venezuela; or
- (b) The government of the People's Republic of China, the Republic of Cuba, the Islamic Republic of Iran, the Democratic People's Republic of Korea, the Russian Federation, or the Bolivarian Republic of Venezuela.

A prohibited entity does not include a citizen or legal permanent resident of the United States, or an individual foreign national."

The undersigned hereby certifies the following:

1. I am an authorized representative and agent of _____ ("Bidder");

2. Initial one:

___ Bidder is not a Prohibited Entity as defined by SDCL 5-18A-1(19A); or

___ Bidder is a Prohibited Entity pursuant to SDCL 5-18A-1(19A) but grounds for waiver exist pursuant to SDCL 5-18A-52. If marking this option, provide the basis for the requested grounds for waiver.

3. I understand that a Bidder who becomes a Prohibited Entity, as defined above, at any time after making this certification that it is not a Prohibited Entity, Bidder must provide written notice to the City, who may terminate the contract.

4. I understand that the City of Box Elder has the right to terminate a contract with any contractor who submits a false certification, and that any bidder who submits a false certification may be subject to suspension or debarment under SDCL 5-18D-12.

Dated this _____ day of _____, 20____.

(Contractor Business Name)

By: _____

Printed name: _____

Title: _____